

Marine Protected Areas (MPAs)

Jen Love, Natural England

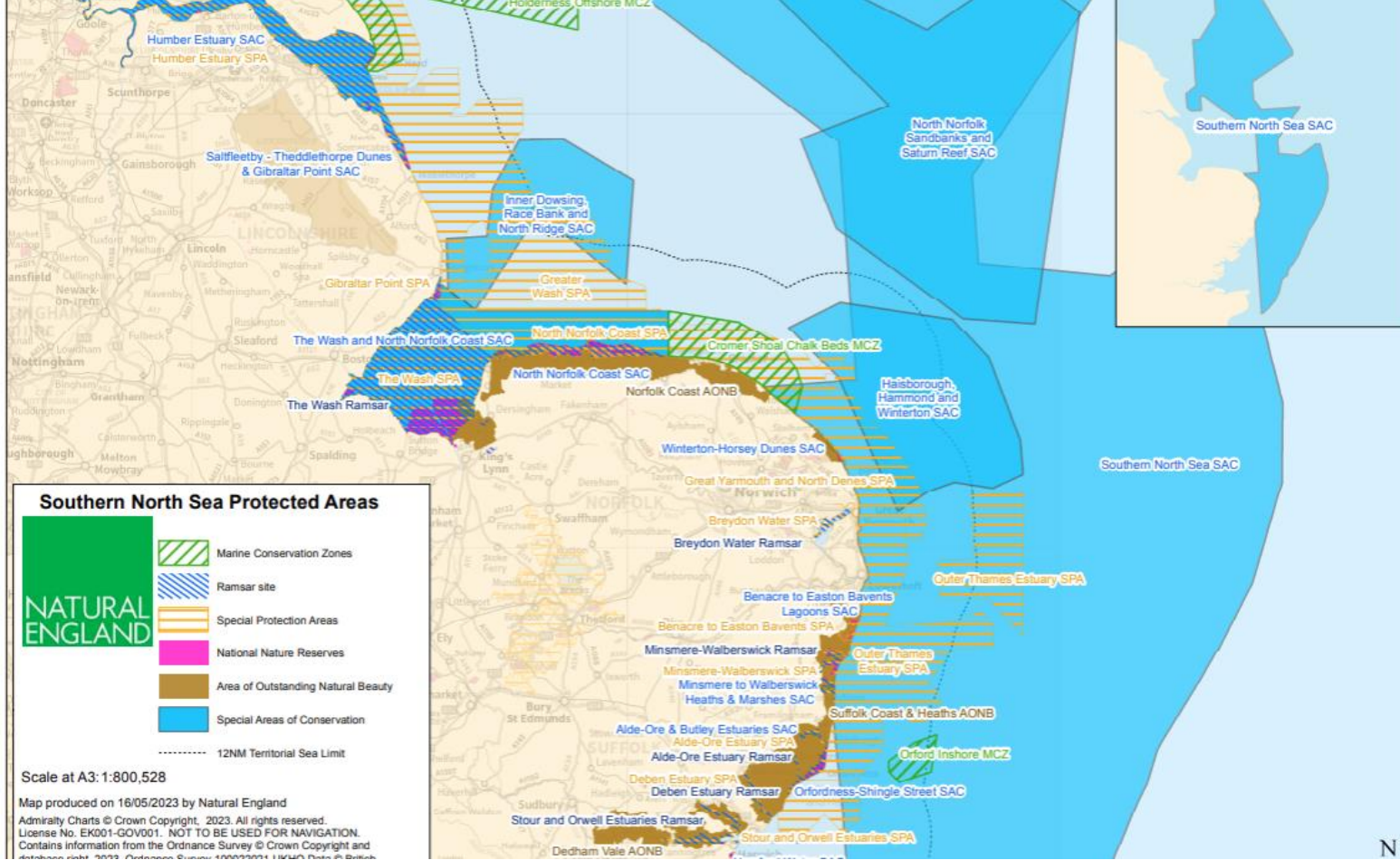


Organisations involved in MPA Community of Practice

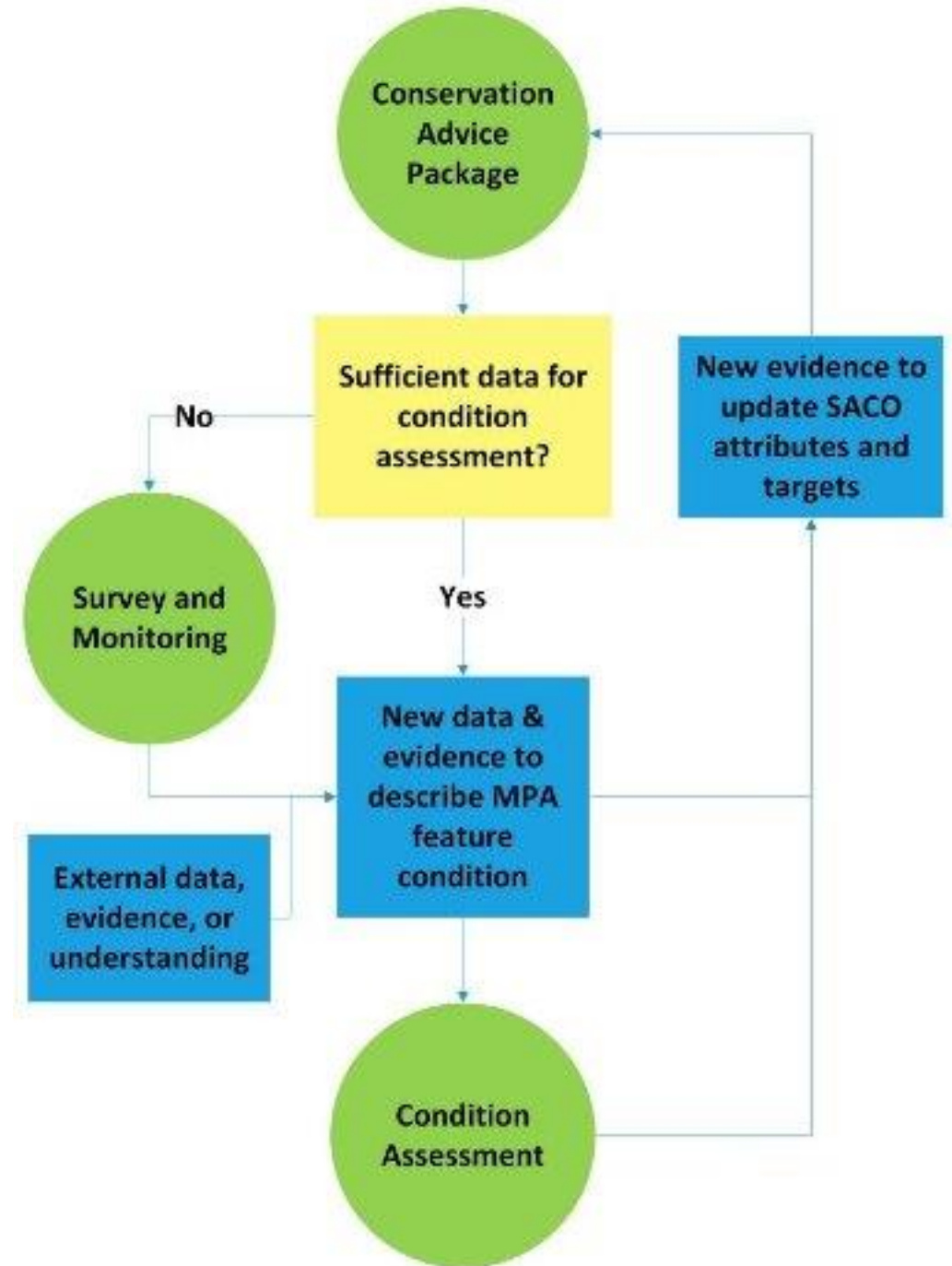


East Marine Ecosystems
Reporting Annual Change in the
East Region & Building Social Capital





MPA cycle



Natural England Conservation Advice for Marine Protected Areas The Wash and North Norfolk Coast SAC - UK0017075









THIS CONSERVATION ADVICE PACKAGE HAS BEEN REVIEWED AND UPDATED FOLLOWING RECENT NATIONALLY SIGNIFICANT INFRASTRUCTURE PROJECT (NSIP) CONSENT DECISIONS. NOTE THAT THESE UPDATES ARE PART OF A PILOT PROJECT AND WILL BE SUBJECT TO FURTHER REVIEW.

Natural England guidance

This site collection contains Natural England's conservation advice for this site. It fulfils Natural England's responsibility under the [Conservation of Habitats and Species Regulations 2017 \(as amended\)](#), to give advice on how to further the conservation objectives for the site, identify the activities that are capable of affecting the qualifying features and the processes which they are dependent upon.

Conservation Advice Components:

Natural England's conservation advice for this site is made up of a number of components. You will need to consider:

							
Site Information View key information about the designated site, its features/sub-features and their descriptions. Last updated: 9th May 2023	Background Information and Geography View additional information about the location, geography and ecology of the site and its features.	Site Maps View the spatial location of the site and its features on the Geographical Information System.	Conservation Objectives View information about the high-level, legal objectives for the site and its features.	Supplementary Advice on Conservation Objectives See the 'Supplementary Advice on Conservation Objectives' to view the range of ecological attributes for the site. Last updated: 9th May 2023	Advice on Operations View information on the sensitivity of features, for this site, to the pressures exerted by different activities. Last updated: 18th March 2024	Advice on Seasonality View the months in which each mobile feature occurs in this site. Last updated: 20th March 2017	MPA Assessment Tool Use the MPA Assessment Tool for this site, to produce an output that links pressures from the Advice on Operations to attributes of the Conservation Objectives. Last updated: 18th March 2024



Monitoring and evidence 2023 / 2024

- Wash Intertidal *Sabellaria spinulosa* survey (NE)
- Invasive Non-Native Species survey at West Runton (NE)
- Eastern IFCA led surveys to inform Adaptive Risk Management in Cromer Shoal Chalk Beds MCZ (EIFCA)
- Assessment of Carbon Capture and Storage in Natural Systems within The English North Sea (Including within MPAs) (TWT)
- Holderness Coast habitat map using multibeam and backscatter datasets (NE)

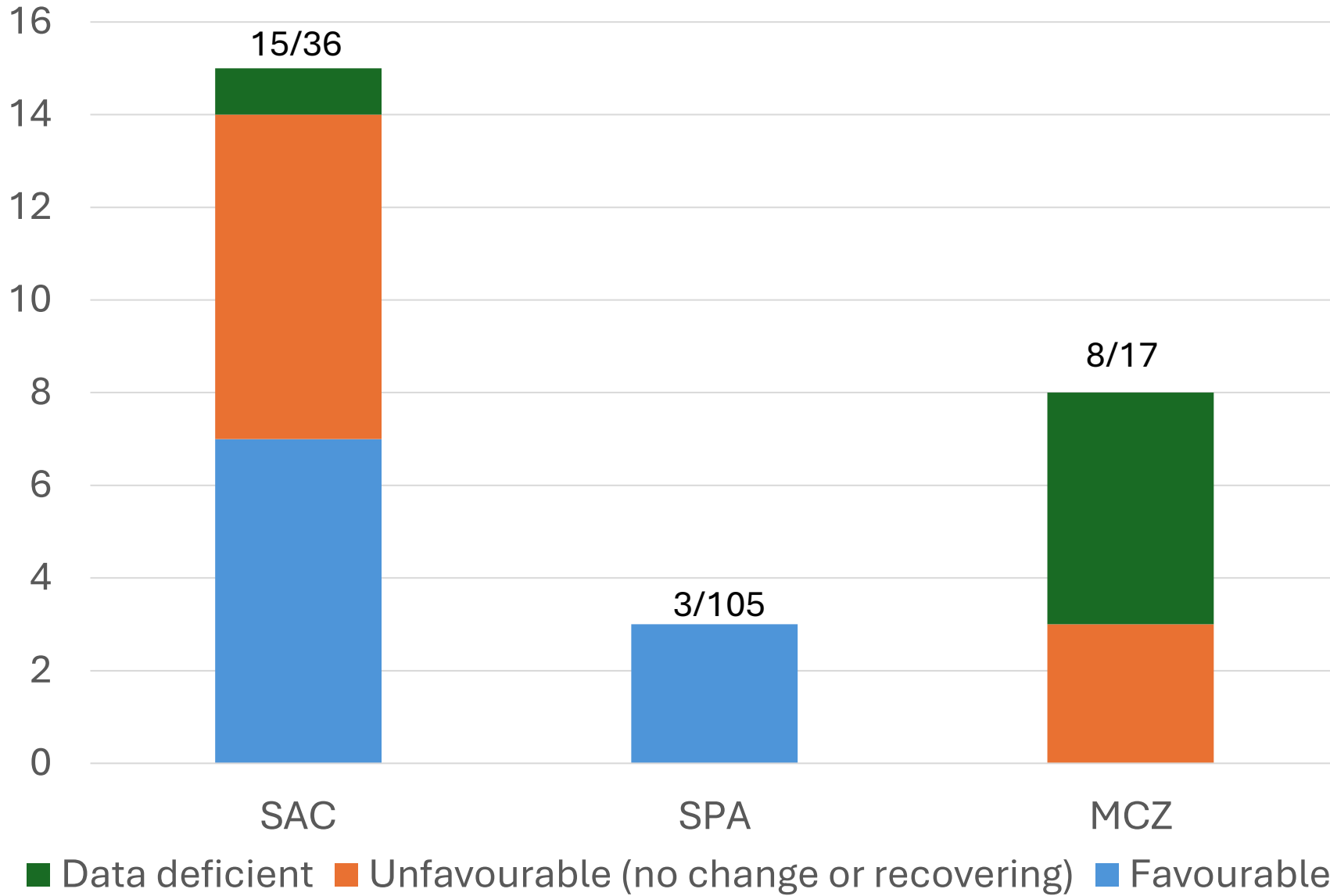


Monitoring and evidence 2023 / 2024

- Sea Mammal Research Unit Wash and North Norfolk Coast breeding seal survey (SMRU)
- Wash hydrodynamics report (NE)
- Mapping existing BGS data (NE)
- Wash Oystercatcher Mortality Report (BTO/NE)
- Wash cockle and mussel surveys (EIFCA)
- Flamborough and Filey Coast SPA Seabird Monitoring Programme (RSPB/NE)



Condition Assessments



Condition Assessments 2023 / 2024



The Wash SPA

Redshank (non-breeding)	100% favourable
Knot (non-breeding)	100% favourable
Pink-footed goose (non-breeding)	100% favourable

Coastal lagoons	59% favourable, 5% Unfavourable No Change, 36% not assessed
-----------------	--

The North Norfolk Coast SAC

Cromer Shoal Chalk Beds MCZ

Subtidal chalk	100% Unfavourable No Change
Subtidal mixed sediments	100% Unfavourable No Change
Subtidal coarse sediments	100% Unfavourable No Change



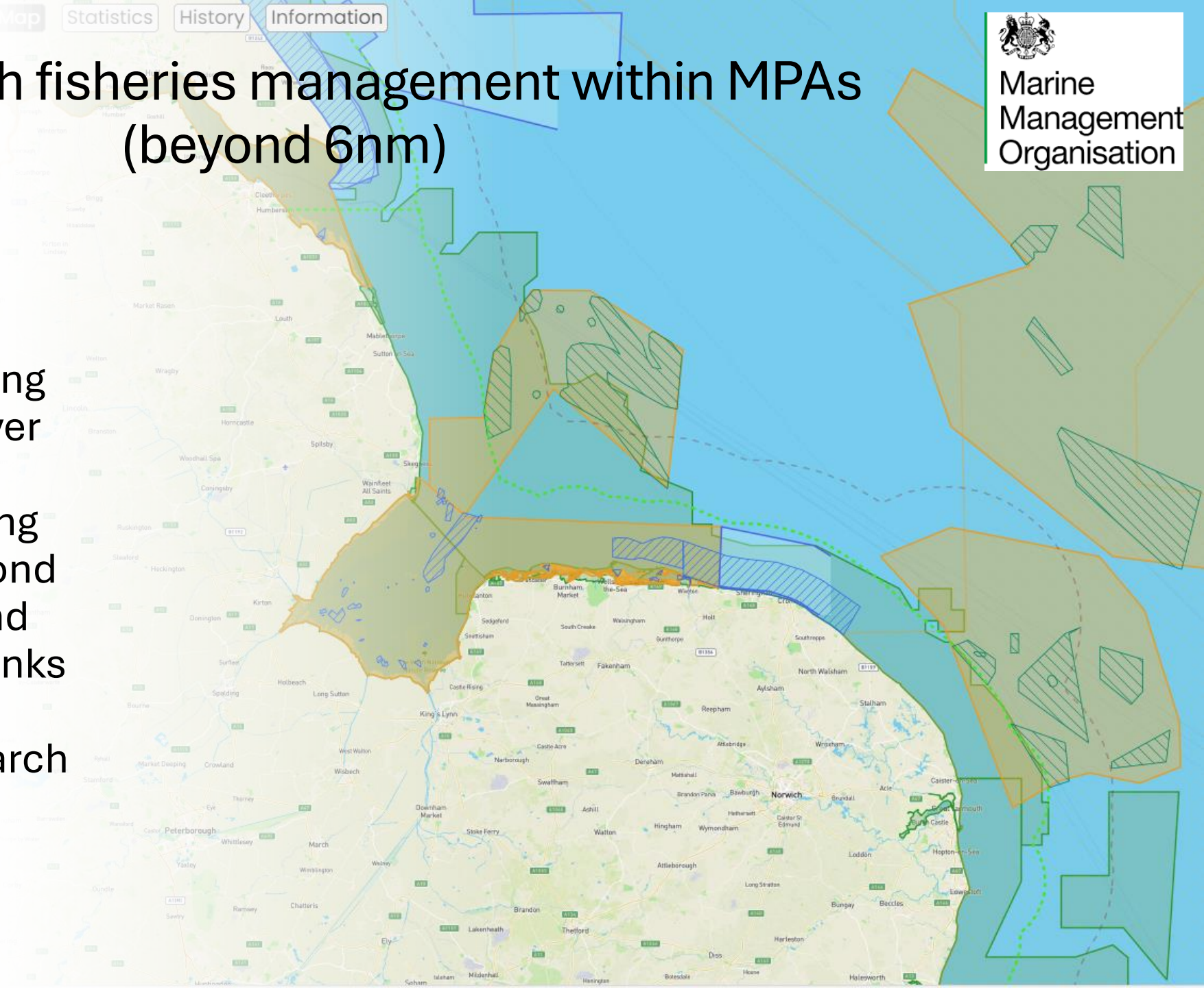
Progress with fisheries management within MPAs (within 6nm)

- Defra have set an end of 2024 deadline for all necessary fisheries management to be in place within Marine Protected Areas
- Inshore Management is now either in place or awaiting sign off for red-risk interactions
- Eastern IFCA are currently conducting HRAs for amber interactions in 17 MPAs (aim to complete by end of 2024)
- Eastern IFCA assessing impact of potting on rugged chalk within Cromer Shoal Chalk Beds MCZ using Adaptive Risk Management (ARM), to determine what level of management is required



Progress with fisheries management within MPAs (beyond 6nm)

- MMO byelaw prohibiting bottom-towed gear over almost 4,000 km² of English coast (including Haisborough, Hammond and Winterton SAC and North Norfolk Sandbanks and Saturn Reef SAC) came into effect in March 2024.



MPA Reality Check

Insights into how fully we are protecting and managing our marine environment.



- IFCA boundaries
- 12nm limit
- Highly Protected Marine Areas (HPMAs)
- Marine Conservation Zones
- Special Areas of Conservation
 - SAC
 - Harbour porpoise SAC
- Scottish NCMAs
- Special Protection Areas
- Areas closed to demersal fishing
 - IFCA byelaw
 - Other UK
 - International/other
- Fishing activity data
- Broad-scale habitats

Data sources
 The Reality Check is iterative, and will be reviewed as management changes.

MPA reality check

Managing Marine non licensable activities within MPAs

- Include sailing, powerboating, non-motorised watercraft, diving and snorkeling
- Site assessments will be completed in consultation with stakeholders
- Cromer Shoal Chalk Beds MCZ and The Wash and North Norfolk Coast SAC will soon undergo consultation with workshops planned for mid-June



OWF Project	MPAs impacted	Compensation agreed / proposed
Hornsea Project Three	Flamborough and Filey Coast SPA Wash and North Norfolk Coast SPA North Norfolk Sandbanks and Saturn Reef SAC	Additional nest sites for kittiwake Marine debris removal
Norfolk Boreas and Vanguard	Flamborough and Filey Coast SPA Haisborough, Hammond and Winterton SAC Alde – Ore Estuary SPA	Additional nest sites for kittiwake Marine debris removal (final design yet to be signed off by SoS) Predator fencing for lesser black backed gull
Hornsea Project Four	Flamborough and Filey Coast SPA	Compensation required for kittiwake and guillemot (final design yet to be signed off by SoS)
Dudgeon Extension Project and Sheringham Extension Project	Greater Wash SPA Flamborough and Filey Coast SPA Cromer Shoal Chalk Beds MCZ	Compensation required for sandwich tern (final design yet to be signed off by SoS) Compensation required for kittiwake and guillemot (final design yet to be signed off by SoS) Native oyster bed restoration

Compensation for offshore wind

Strategic compensation

Plans for a Marine Recovery Fund to be set up as a method of taking payment to fund strategic compensation

Secretary of State has approved the following measures for strategic compensation to date:

- For seabed (benthic) impacts: designation and extension of Marine Protected Areas in English waters.
- For seabirds:
 - Offshore Artificial Nesting Structures for kittiwake in English Waters.
 - Predator Reduction.



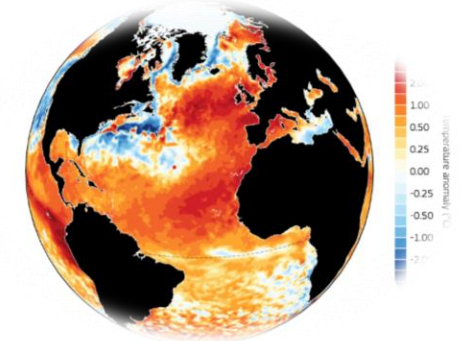
Gaps in Knowledge and Future Challenges



Impact of offshore industries and effective compensation



Water quality



Climate change



Passive vs active restoration



Fisheries impacts and the effectiveness of management measures



Marine monitoring and data!



Summary

- There have been many positive steps forward in protecting and aiding recovery of our MPAs over the past year, but there is still a long way to go
- There is often limited data available to assess site condition and determine effective management
- It is therefore vital that all organisations with a role in managing and protecting our MPAs work together to share data, knowledge and experience in order to recover the important habitats and species protected within them

jennifer.love@naturalengland.org.uk

Thank you to all involved in the
Marine Protected Area
Community of Practice!

Any Questions?

