



Coastal and Estuarine Habitats

Contributions

- Milo Sumner (RSPB)
- Rebecca Bromley (National Trust)
- Andrew Excell (Suffolk Wildlife Trust)
- Susan Wilson (Natural England)
- Colin Scott (ABPmer)
- Alicia Shephard (Environment Agency)
- Olwen Belgrove (ZSL)
- Imogen Bentley (Lincs Wildlife Trust)
- Beth Mather (Natural England)
- Jack Digman (Natural England)
- Hannah Westoby (Environment Agency)
- Eve Leegwater (Environment Agency)

Beneficial use of Dredged Sediments (BUDS)

Blackwater Estuary

- Create and replenish **6.7 Ha** of sand and shingle beach.
- Protect saltmarsh promontories and coastal flood defences from erosion and wave action.
- Contribute to the continued protection of **289 properties** in Tollesbury, West Mersea and Salcott
- Provide habitat for beach nesting birds whilst protecting saltmarsh habitat.



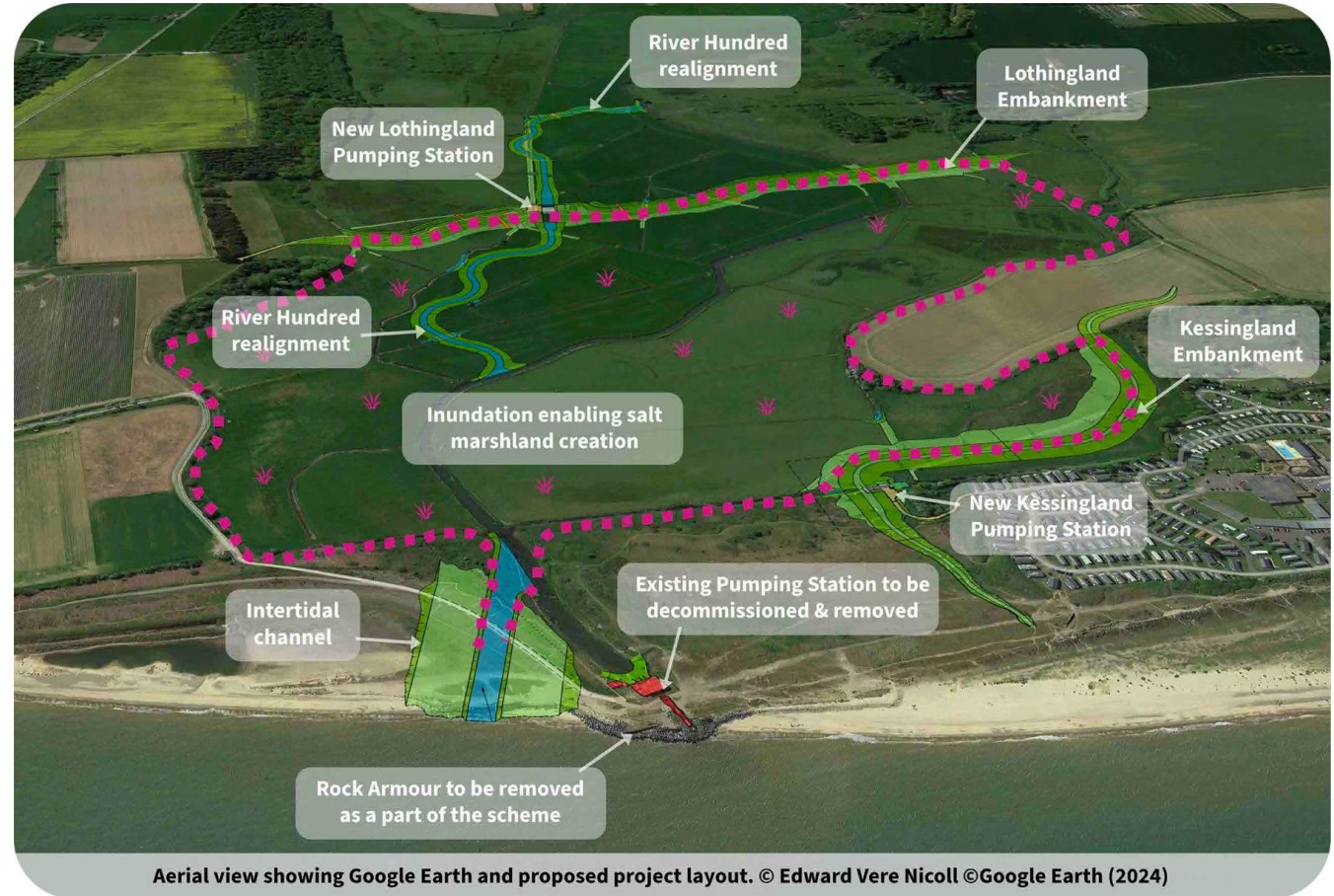
Levington Lagoon

- BUDS work continued and upscaled
- Additional coir structures have been installed to retain sediments
- Ongoing monitoring to continue via Lidar imagery.
- Key Benefits for saltmarsh habitat resilience and reconnectedness.



Benacre & Kessingland Flood Management Project

- Second largest realignment on a dynamic open coast
- Creation of over 80ha of intertidal habitat
- Creation of Freshwater habitats
- Replacing the existing pumping station and construction of a new embankment
- On schedule to be completed in 2030



Aerial view showing Google Earth and proposed project layout. © Edward Vere Nicoll ©Google Earth (2024)

Creation of bird island at Northey – National Trust

- Siting of three redundant Thames lighter barges on the edge of the saltmarsh at Northey Island, in the Blackwater Estuary, Essex
- Barges sited and filled with dredged material from the estuary to create an island
- island will be topped with gravel, making it an ideal nesting site for Little Tern and Oystercatchers



Landscape Recovery Projects

Lincolnshire Wash Landscape Recovery Project

- Submitted all the documents to Defra in 2025

Large-scale nature recovery project which aims to:

- Improve the condition of saltmarsh as wildlife habitat, flood defence and carbon store
- Expand areas for threatened wildlife by creating a mosaic of wetland habitats
- Create opportunities for people to benefit from the landscape in their work or leisure, boosting health, wellbeing and the local economy



Wilder Humber



Seagrass

- Completed a seagrass planting trials comparing three different methods – DIS, seed bags, and transplant cores
- Transplant trial – 92.7% success rate
- 2 ha planted through seed based methods

Native oysters

- First and largest intertidal oyster experiment in the UK, with 280,000 native oysters returned to the Humber

Saltmarsh and sand dunes

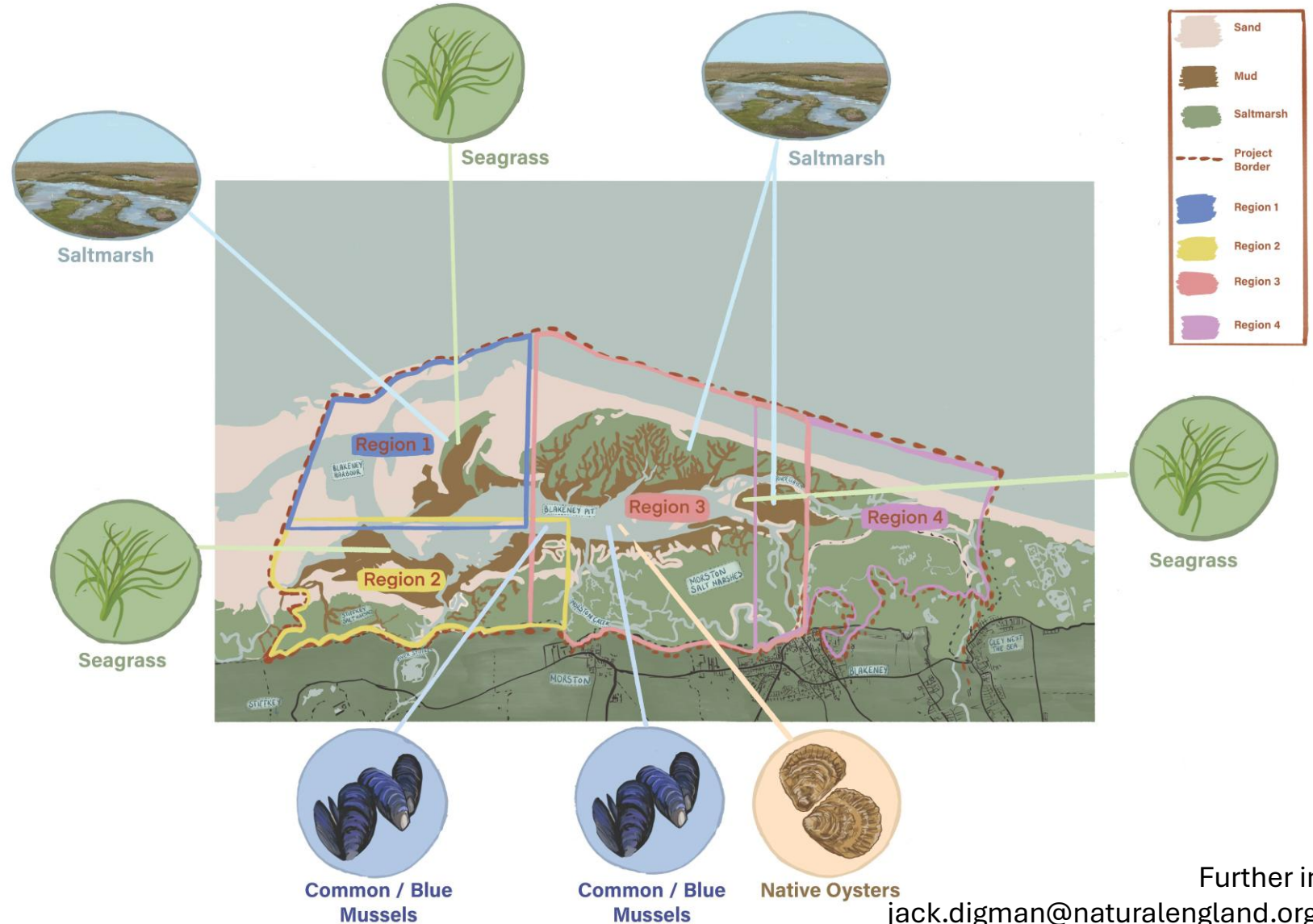
- Enhanced dune habitats through grazing and strengthened breeding bird protection
- Continued the build of Sea View Farm
- Identified 1600m² of couch grass for cutting trials

Communications

- Raised national profile through BBC Countryfile and major TV news coverage
- 19 engagement events reaching approximately 5200 people
- Over 1000 volunteer hours recorded

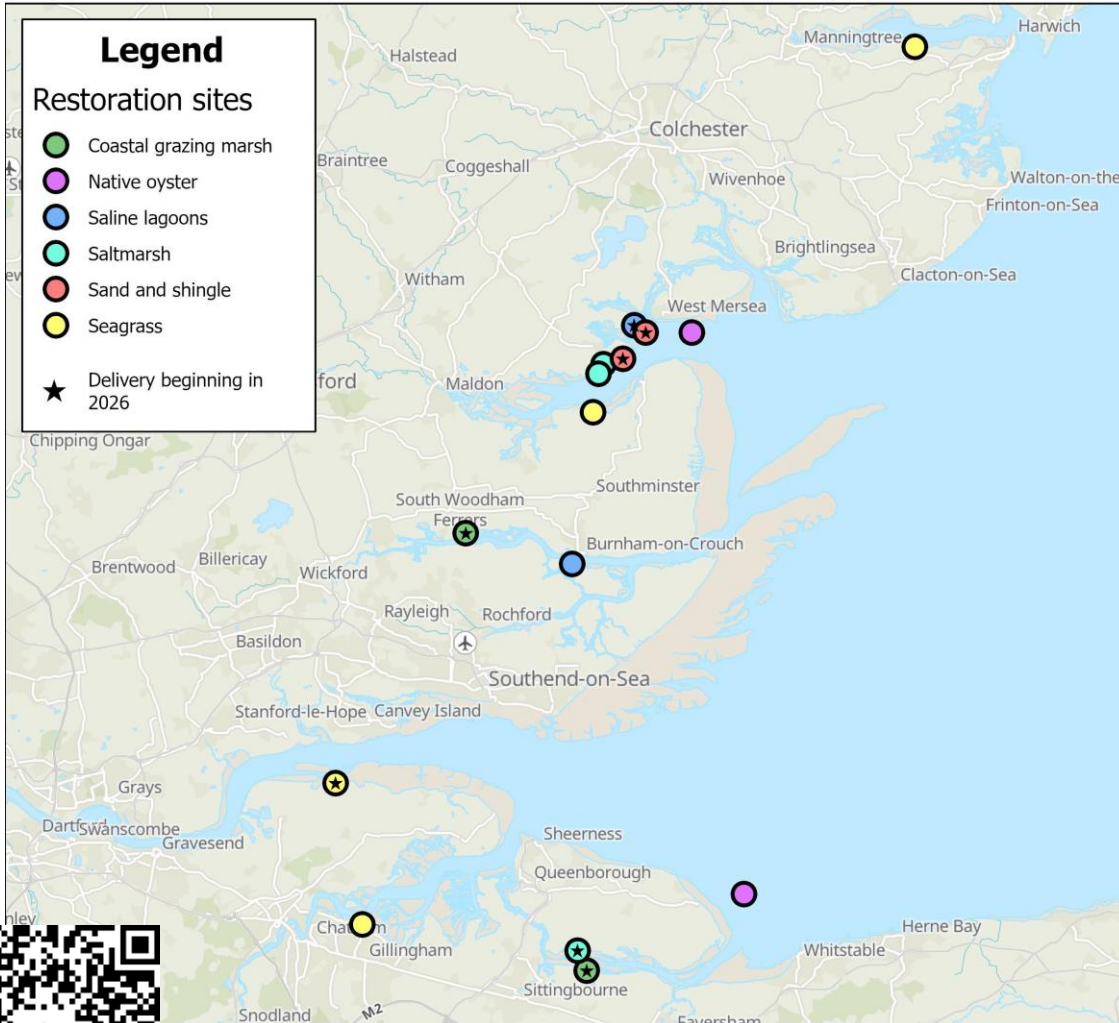
Blakeney Harbour Multi-Habitat Restoration Project

The Blakeney Multi-Habitat Restoration project is a collaborative stakeholder project looking into marine landscape scale recovery



Further info:
jack.digman@naturalengland.org.uk

Transforming the Thames – 2026 highlights



15 restoration sites - 7 planned to begin delivery in 2026.



Water quality meta-analysis – Bring all the existing data together to identify trends/primary drivers.



Conference – Bringing people together to share learnings across the estuary. 9th November 2026.



Inspire people – Through social media, press, and an artist in residence.



Research ecological function – To enable strategic planning for our next tranche of restoration work



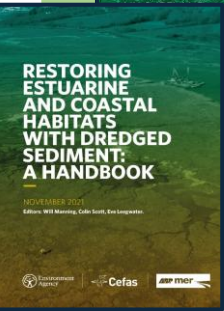
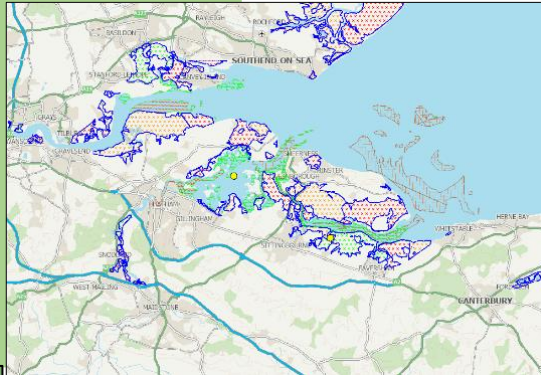
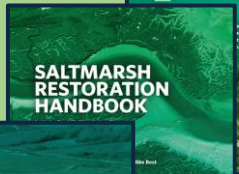
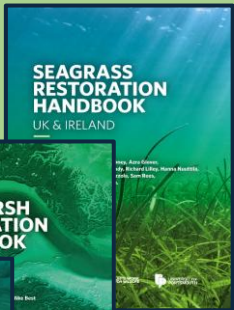
Find out more transformingthames.co.uk

ReMeMaRe

Restoring Meadows, Marsh and Reef

1. Tools and Guidance

What, Where, How?



2. Influencing & Advising Government

- Environment Improvement Plan Targets
- Marine Enhancement Directory (MEnD)



3. Restoration Action

- Project pipeline
- Securing funding
- Streamlining licencing



4. Partnership

Bringing the restoration community together



Functionally Linked Land

- Sandilands, Lincolnshire Coast – National Trust
National Trust Sandilands site opened to the public in 2025 – transformation of a golf course back into a nature rich haven for wildlife
- SSF Species Coastal and Wetlands - RSPB
Wetland restoration at 9 sites across south-east England
349ha of coastal and floodplain grazing marsh restored.
17,568m of foot drains created.
10,550m of predator-exclusion fencing installed.
40 islands created.
- Martlesham Wilds, Suffolk Wildlife Trust
Wetland habitat enhancement over 37 ha
2.5ha open water scrapes created for breeding waders
2 new viewing platforms installed along the coast path.



Countryside Stewardship on the Coast

CSHT supports farmers, foresters and land managers to manage their land in a way that:

- protects, restores and enhances the natural environment
- improves biodiversity and water quality
- helps tackle the effects of climate change

The new guidance published in 2025 covering actions on the coast including

- Make space for new coastal habitat
- Manage coastal saltmarsh and its vegetation
- Create intertidal and saline habitat on arable land
- Create intertidal and saline habitat by non-intervention
- Create intertidal and saline habitat on intensive grassland
- Manage and restore coastal sand dunes



Natural England – Earned Autonomy

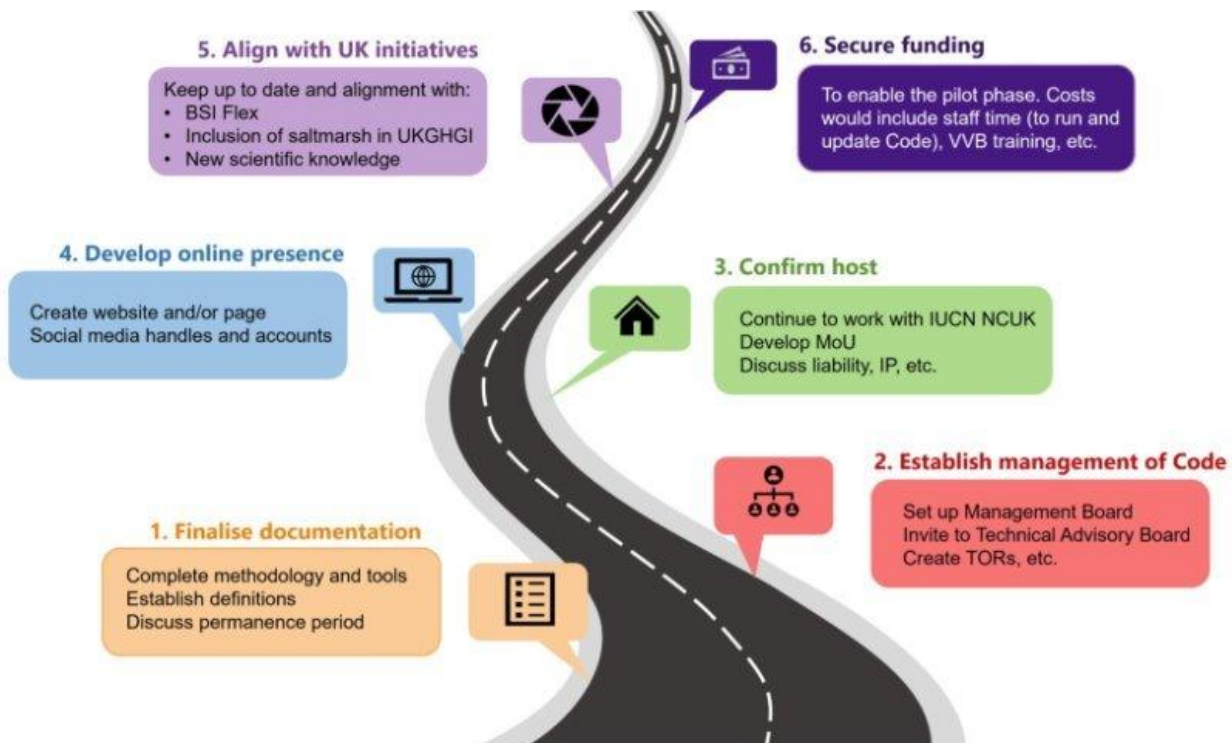
Our Vision:

- Empower organisations with strong track records to lead nature-restoration work with greater autonomy
- Foster collaboration, simplify processes and build capacity.
- Unlock innovative approaches that drive meaningful environmental outcomes.

We want to make nature recovery easier.



SALTMARSH CODE



2025-2026

- Updated documentation to incorporate new guidance and feedback from BSI
- Updated risk tool to include newly available products including Met Office erosion map of the UK
- Carbon calculator updates to improve predictions
- 2026-2027: developing the roadmap to operationalisation including a pilot phase



Thank you